

27th International Biology Olympiad

17th-23rd July, 2016

Hanoi, Vietnam

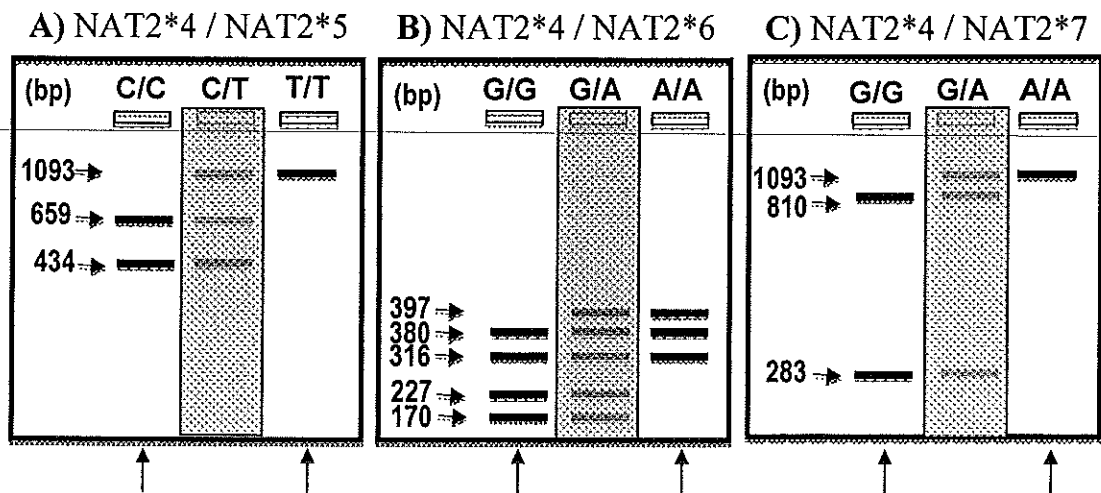


Practical Exam 4 MOLECULAR BIOLOGY

**ANSWER KEYS
with
SCORING SCHEME**

Total points: 100 points

Q.1.1 (12 points)



Scoring scheme:

- + Scored per lane (2.0 points/lane)
- + For each lane, both the number of bands and the position of each band must be correct.

Total points: 2.0 points x 6 lanes = 12 points

Q.1.2 (5 points)

Reagents (in μL)	NAT2*4 / NAT2*5 (labelled a)	NAT2*4 / NAT2*7 (labelled b)
Sterile water (W)	4.5	4.5
10 x Restriction Buffer (BF)	1	1
PCR products of genomic DNA (2.0 $\mu\text{g}/\mu\text{L}$)	3.5	3.5
RE 1 (<i>KpnI</i>)	1	-
RE 2 (<i>BamHI</i>)	-	1
Total volume (μL)	10	10
	↑	↑

Scoring scheme:

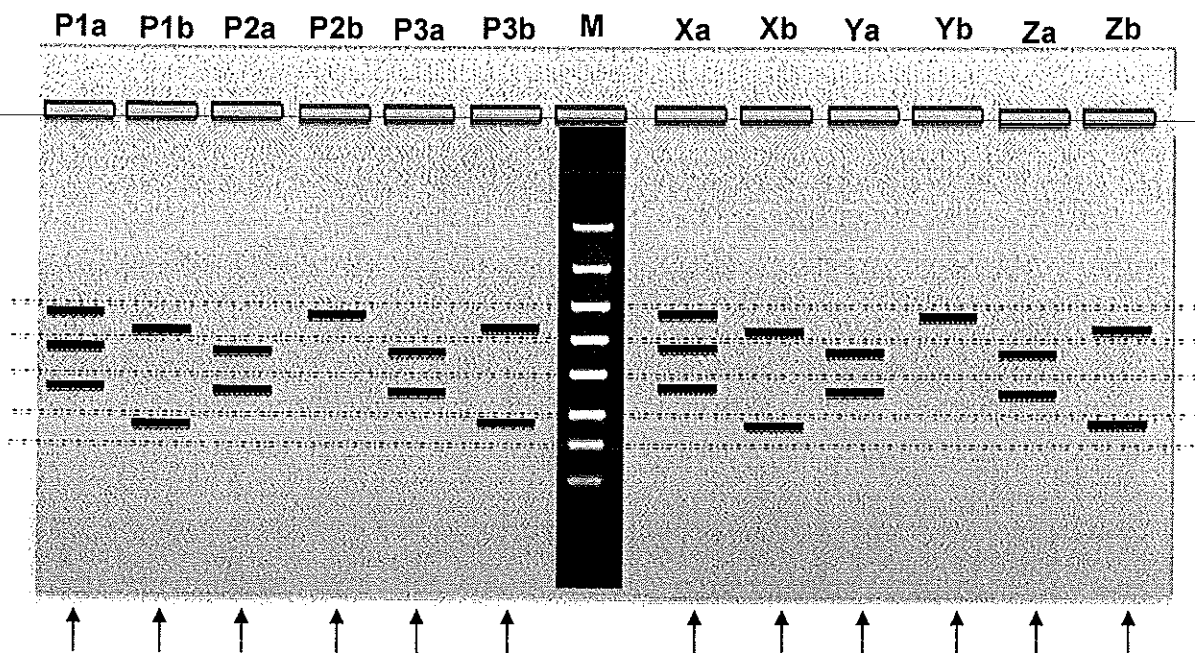
+ Scored per box (cell).

+ **0 points** to the first two correct boxes;

+ **0.5 point** is given for each correct box from the third correct one.

Total points: 0.5 points x 10 boxes = **5 points**

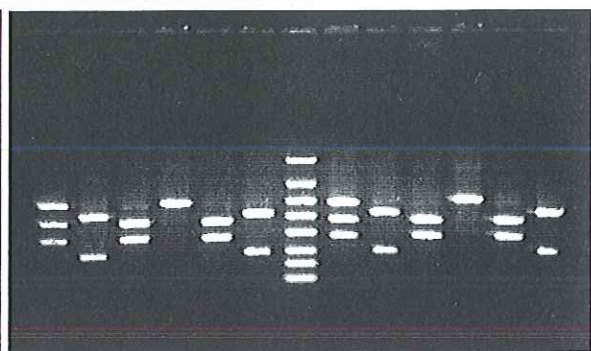
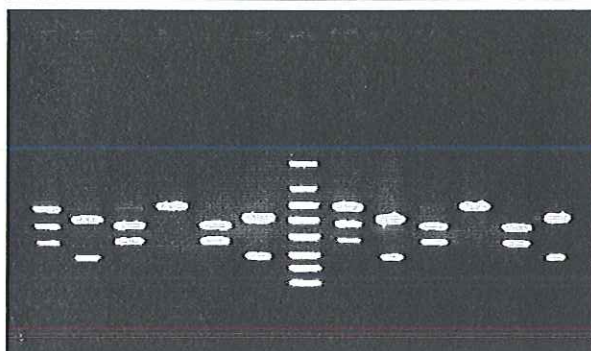
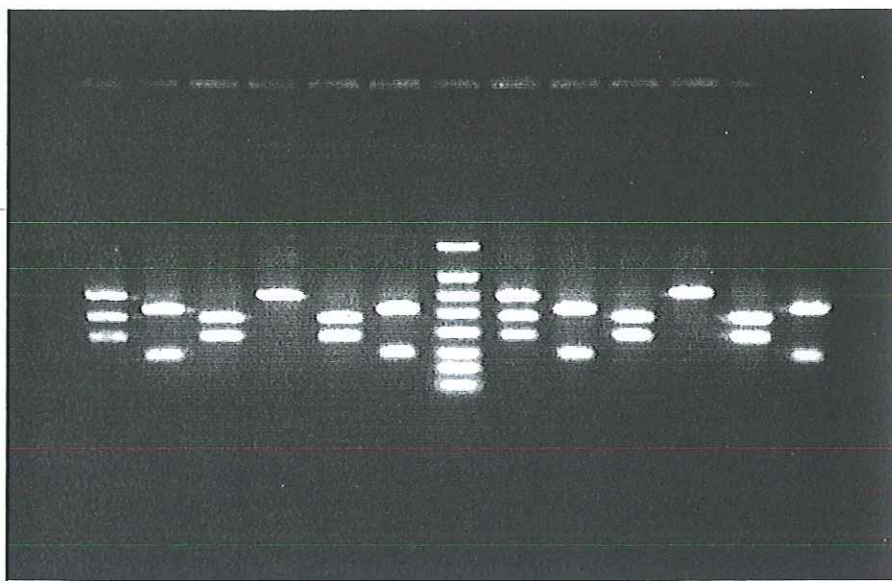
Q.2.1. Drawing of gel (1.5 points x 12 lanes = 18 points)



Scoring scheme:

- + Scored per lane (1.5 points/lane)
- + The number of bands and the vertical position of each band must correspond to the photographed gel (Q.2.2.) and to the pre-printed ladder (M).

Total points: 1.5 points x 12 lanes = 18 points

Q.2.2. Photo (26 points)**Scoring scheme:**

+ Scored per lane (2.0 points/lane)

+ **For sample lanes:**

- Complete digestion (*see above*): **2.0 points**
- Partial digestion or Missed bands: **1.0 points**
- Un-digestion or Unspecific bands: **0.5 points**
- No band (unloading sample): **0.0 points**

+ **For the ladder (M) lane:**

- Apparently (8) separate bands (*see above*): **2.0 points**
- Loading in wrong positions (with separate bands): **1.0 points**
- Missed band(s) or fused band(s): **0.5 points**
- No band (unloading sample): **0.0 points**

Total points: 2.0 points x 13 lanes = 26 points

Q.3.1. (9 points)

Patients	Biopsy specimens (X, Y or Z)
P1 X
P2 Y
P3 Z

Scoring scheme:

- + Scored per matching (3.0 points/correct matching)
- + Must be evidenced by the gel image (Q.2.1 or Q.2.2)

Total score: 3 points x 3 correct matches = 9 points

Q.4.1. (9 points)

Patients	Genotype at C481T	Genotype at G590A	Genotype at G857A
P1	C / T	G / G	G / G
P2	C / C	G / A	A / A
P3	C / C	G / G	G / G

Scoring scheme:

- + Scored per box (1.5 points/box)
- + Must be evidenced by the gel image (Q.2.1 or Q.2.2)

Total score: 1.5 points x 6 correct boxes = 9 points

Q.4.2. (3 points)

Patients	Slow acetylator	Intermediate acetylator	Rapid acetylator
P1		✓	
P2	✓		
P3			✓

Scoring scheme:

- + Scored per matching; 1.0 point/correct match
- + Must correspond to the genotypes in Q.4.1

Total score: 1.0 points x 3 patients = 3 points

Q.5.1. (6 points)

Patients	INH concentration (mg/L)
P14.548.....
P26.821.....
P32.275.....

Scoring scheme:

- + Scored per box (2.0 points/box)
- + 1.0 points penalty for each number not presented to 3 decimal digits.
- + Must correspond to the phenotypes in **Q.4.2**

Total score: 2.0 points x 3 correct determinants = 6 points

Q.5.2. (12 points)

Patients	Oral dosage (number of tablets per day)
P12 or 3.....
P22.....
P34.....

Scoring scheme:

- + Scored per box (4.0 points/box)
- + 2.0 points penalty for each number not presented in integer.
- + Must correspond to the INH concentration in **Q.5.1**

Total score: 4.0 points x 3 correct determinants = 12 points

----- END OF ANSWER KEYS & SCORING SCHEME -----